














Tools Needed:

-  1.3mm Hex Driver
-  1.5mm Hex Driver
-  2.0mm Hex Driver
-  2.5 mm Hex Driver
-  T10 - T20 Torx Driver
-  Pair of thin Tweezers
-  Small Container for Screws

Color Guide:

-  Action
-  Button Heads Screw
-  Socket Cap Screw
-  Flat Head Screw
-  Thread Forming Screw

Index

Housing

Removing the Back Panel	3
Removing the filament Spool Drawer	3
Removing the Top Cover	4
Disassembling the Housing	9

User Interface Assembly

Removing the UI	4
Disassembling the UI	5

Gantry Assembly

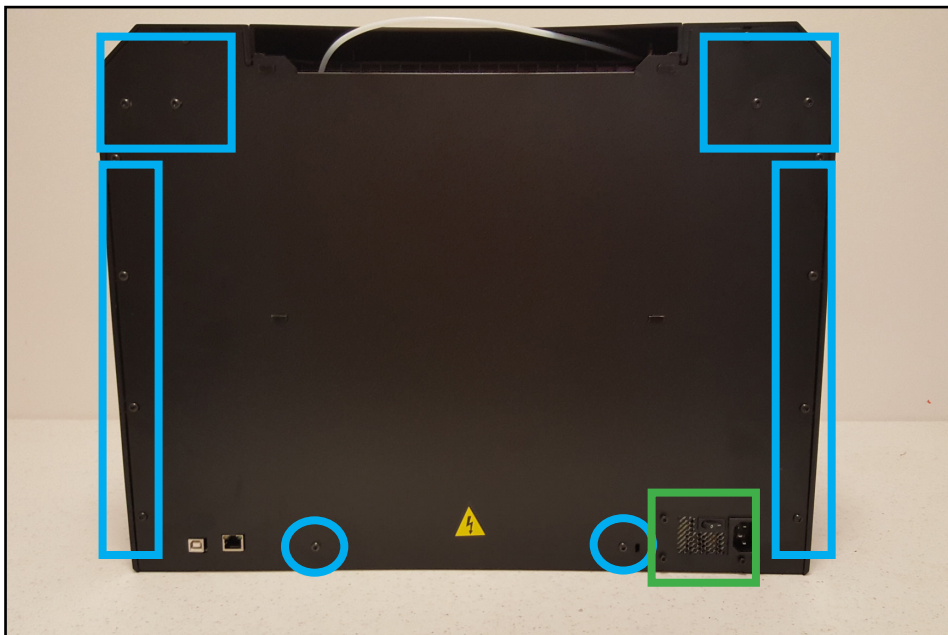
Removing the Carriage	5
Disassembling the Carriage	5
Removing the Gantry	6
Removing the Belt	7
Disassembling the Gantry	7

Electronics

Removing the Brooklyn PCB	8
---------------------------------	---

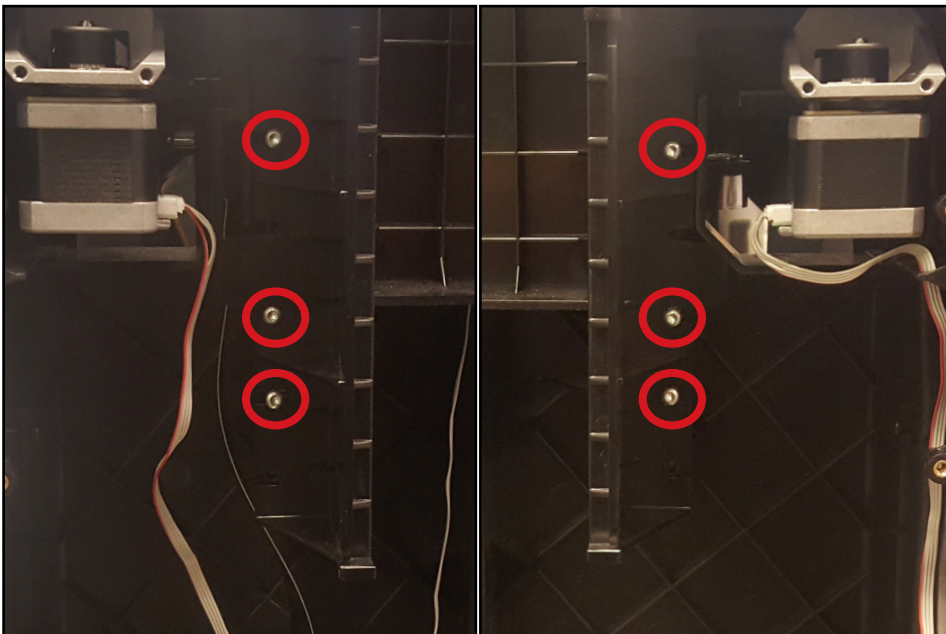
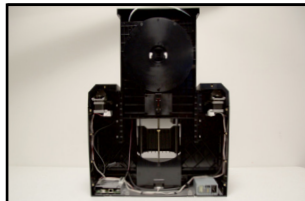
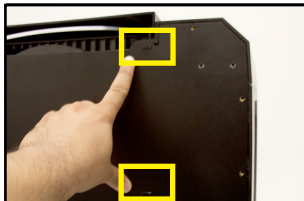
Z Stage Assembly

Removing the Z Stage Case	8
Disassembling the Z Stage	10



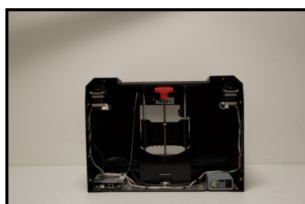
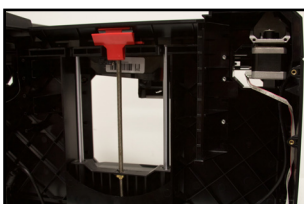
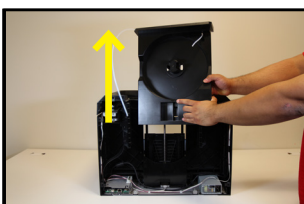
Step 1 - Remove the Back Panel

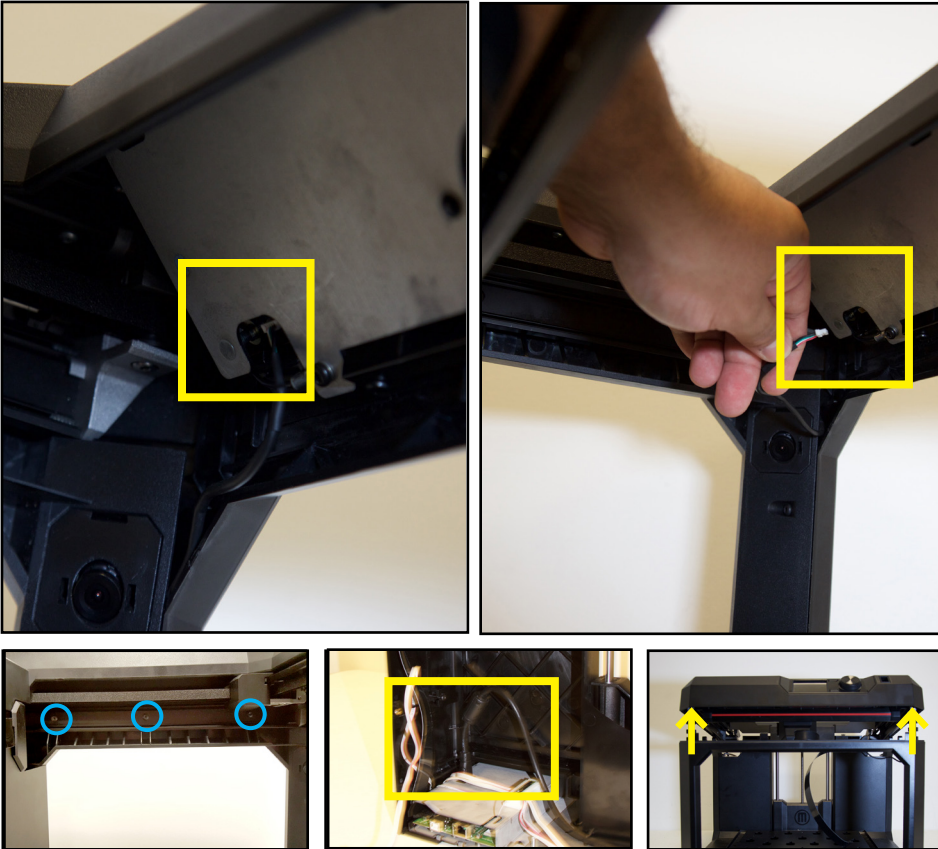
- Remove the following screws from the outer edge of the Back Panel using a T15 screw driver:
 - Six (16) Button Head bolts
 - Four (4) Socket Cap screws surrounding Power Supply
- Gently pull back the Back Panel off. Be mindful of the (4) four tabs in the back that need to be popped out.



Step 2 - Remove Filament Spool Drawer

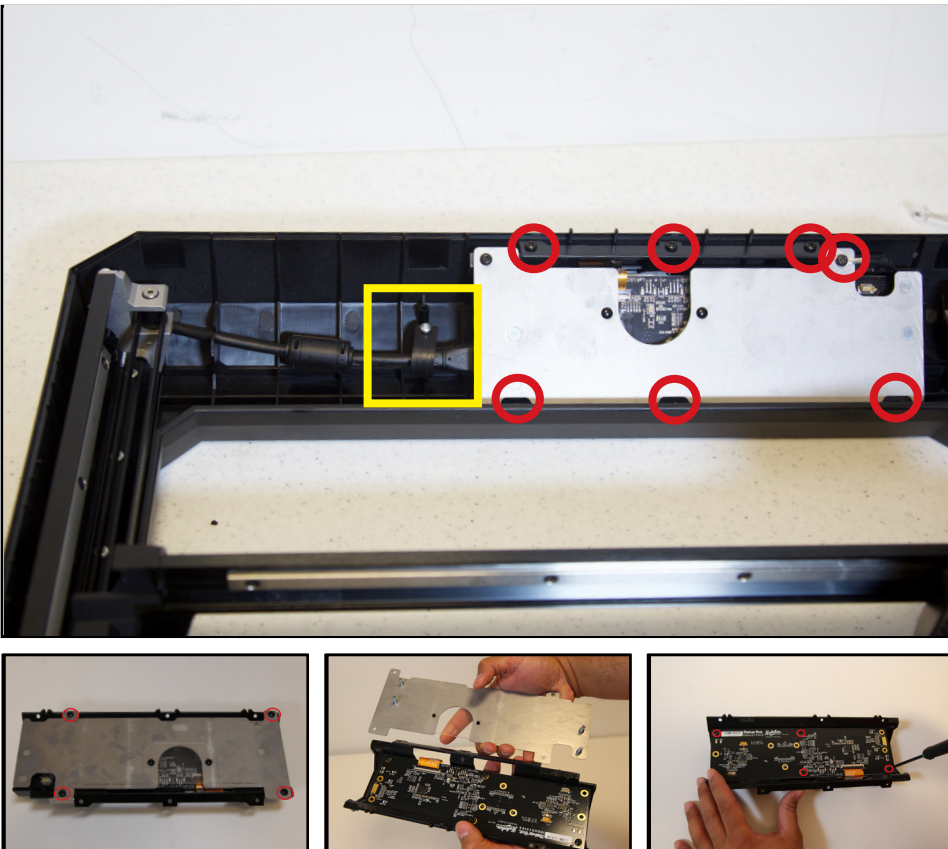
- Remove the six (6) thread forming screws that hold the Spool Drawer Alignment Brackets to the Z-Case and pull away from printer's body.
- Pull the Filament Spool Drawer upward to remove from the body of the Replicator and set aside.





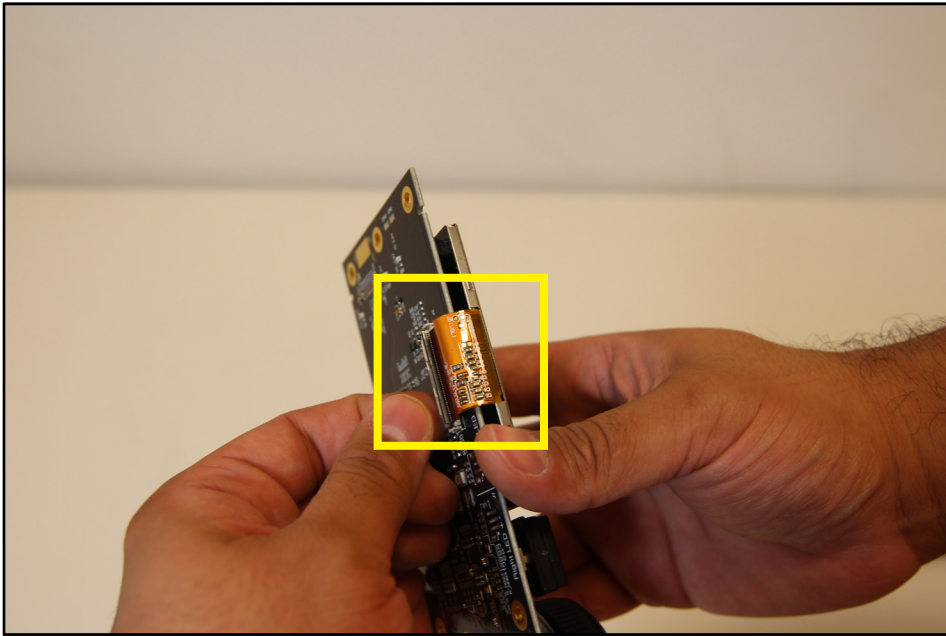
Step 3 - Remove Top Cover

- Disconnect the Camera Wire Harness located behind the User Interface Assembly (UI).
- Remove the six (6) button head screws located on the inside of the printer near the gantry rails attaching the top cover to the side panels.
- Unplug the motor wires and HDMI cable, then lift and remove the Top Cover and set aside.



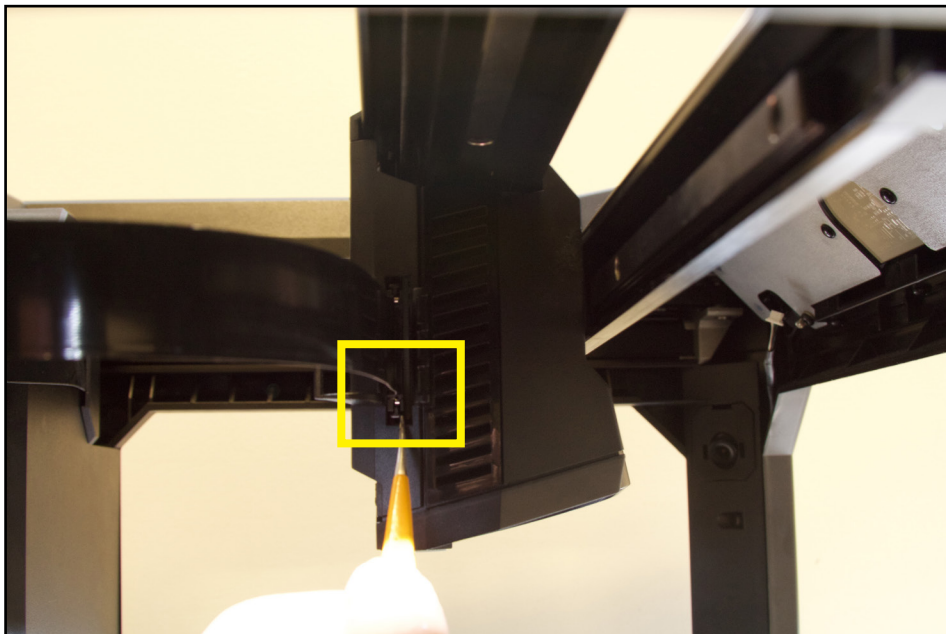
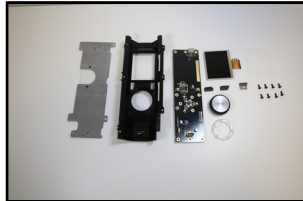
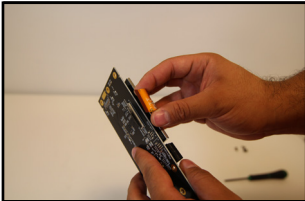
Step 4 - Remove User Interface Assembly (UI)

- Remove HDMI Clip and unplug the HDMI Cable.
- Remove the thread forming screw attached to the grounding cable from the UI.
- Next remove the six (6) thread forming screws attaching the UI to the Top Cover and push the UI out of the Top Cover.
- **Note:** The following steps are only if you need to disassemble the UI.
- Remove the four (4) thread forming screws holding the UI Electrostatic Discharge Cover (ESD) cover onto the UI Faceplate. Pull apart the ESD to separate.
- Remove the three (3) thread forming screws that attach the Hoboken PCB to the UI Faceplate.



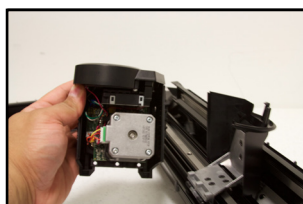
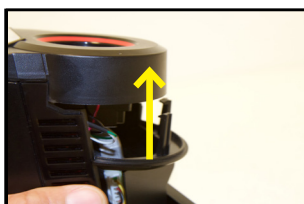
Step 5 - Disassemble the UI (Optional)

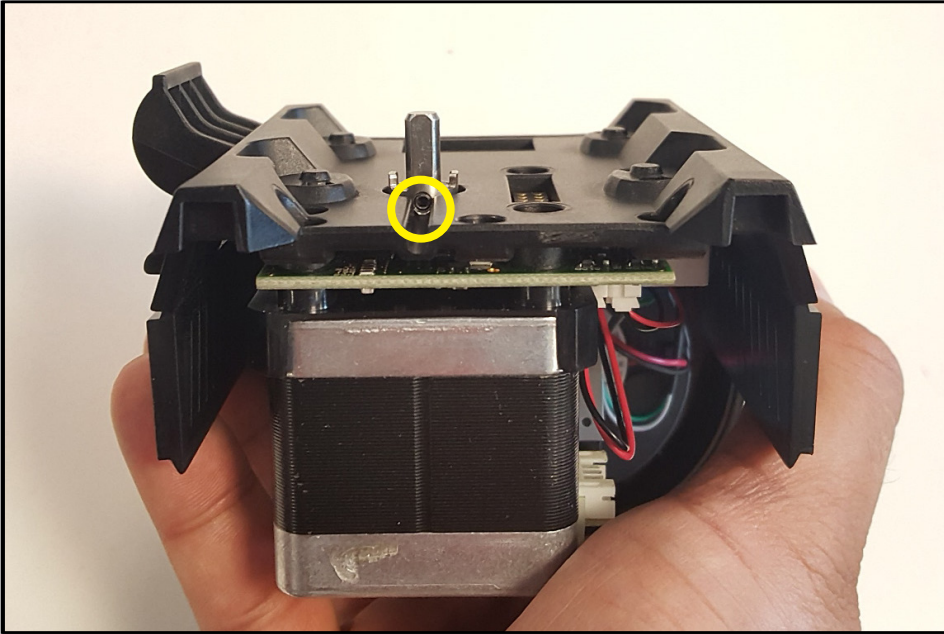
- **Note:** This step only necessary if you troubleshooting the LCD screen or Hoboken PCB
- To disconnect the LCD Screen lift the brown tab on the back of the Hoboken PCB and gently pull out the LCD Screens' ribbon cable and lift the LCD Screen off of the Hoboken PCB.
- **Note:** The LCD Screen is not glued to the Hoboken PCB it's held by pressure.



Step 6 - Remove Carriage Assembly

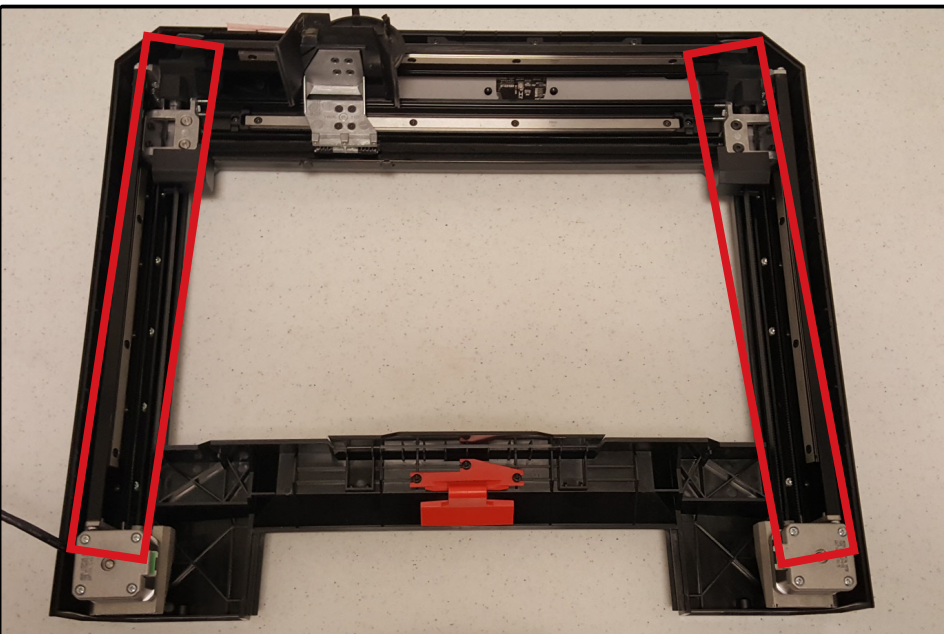
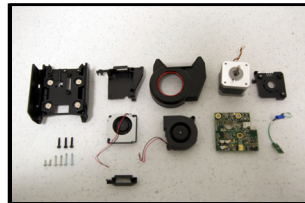
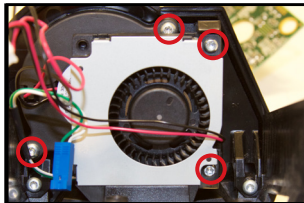
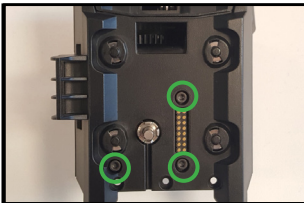
- Using a small tool, a small flat head or a pair of small tweezers will work, unplug the FFC from the carriage by pushing on the tabs on either side of the cable.
- Remove the three (3) socket caps screws attaching the Carriage Assembly to the Carriage Adapter.
- While pressing the sides of the carriage to disengage the snap features located inside of the carriage near, gently apply side to side movement and pull away from the gantry assembly.





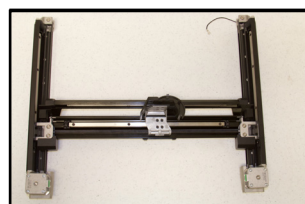
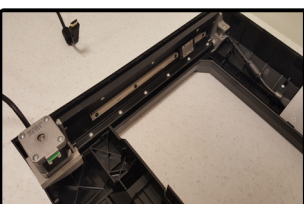
Step 7 - Disassemble Carriage Assembly (optional)

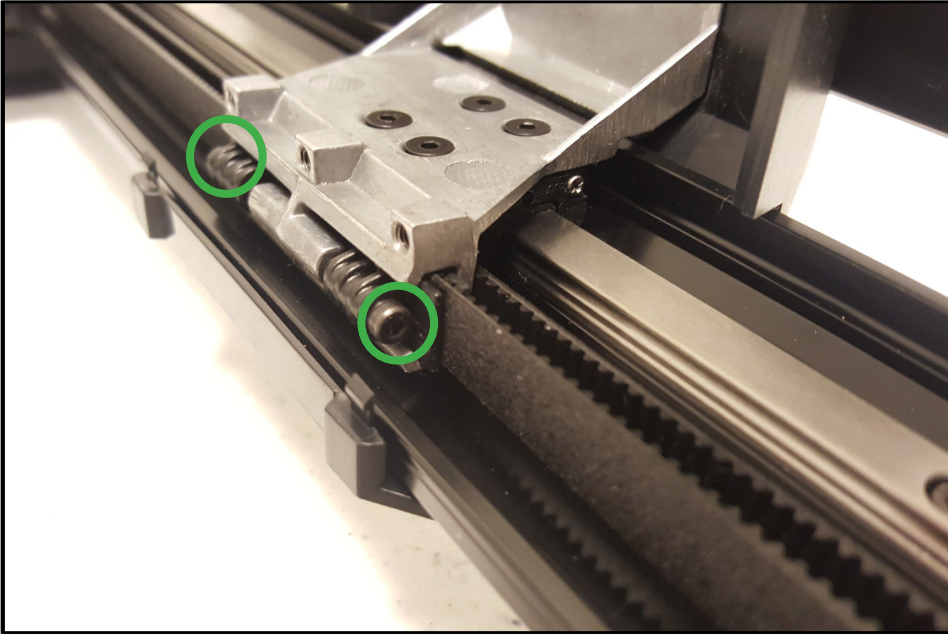
- Remove loosen up the set screw holding the castle nut on to the motor axle.
- Remove the three (3) socket cap screws attaching the motor to the Carriage assembly and set motor aside.
- Remove the two (2) silver thread forming screws attaching the Extruder Fan to the fan mount and set aside.
- Remove the two (2) silver thread forming screws attaching the Active Cooling Fan to the fan mount and set aside.



Step 8 - Remove Gantry Assembly

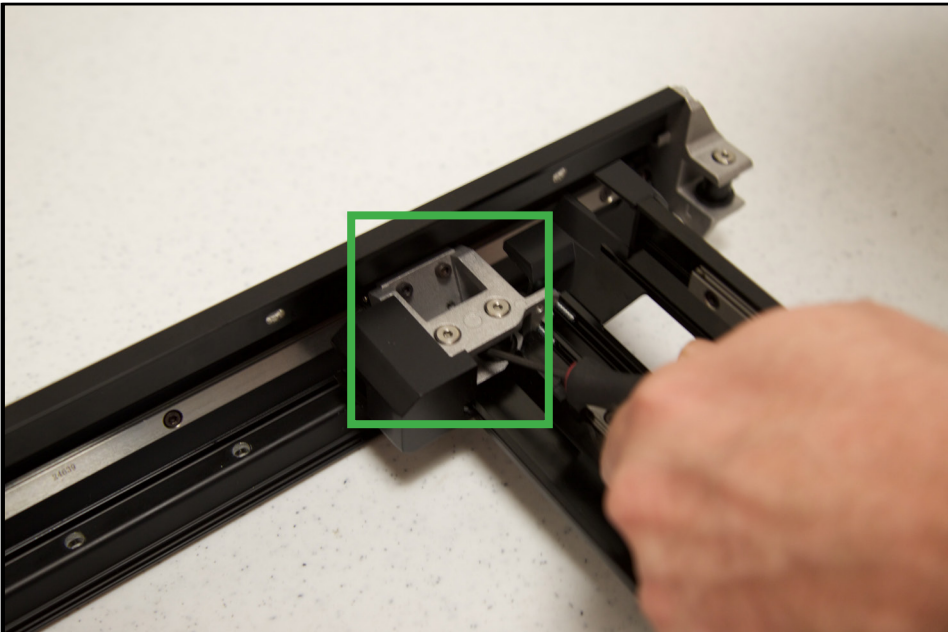
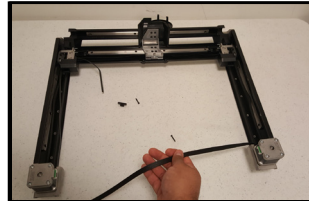
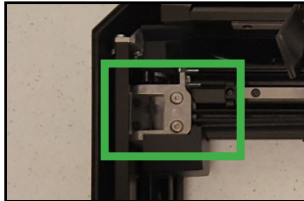
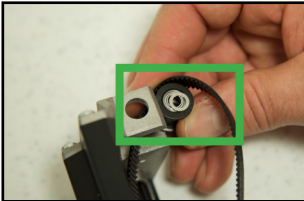
- Remove twelve (12) thread forming screws that attach the Gantry Assembly to the Top Cover of the Replicator+ using a T15 Torx Driver
- Lift Gantry Assembly and set





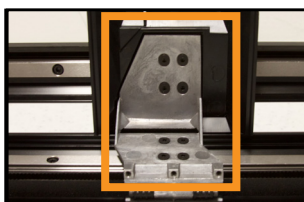
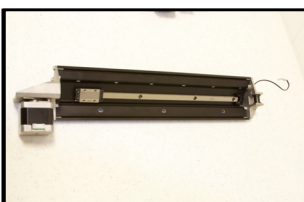
Step 9 - Remove Belt and Belt Clips

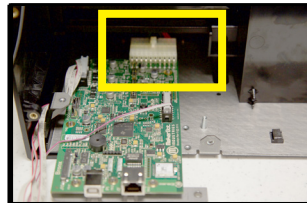
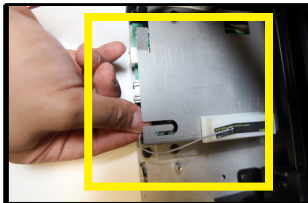
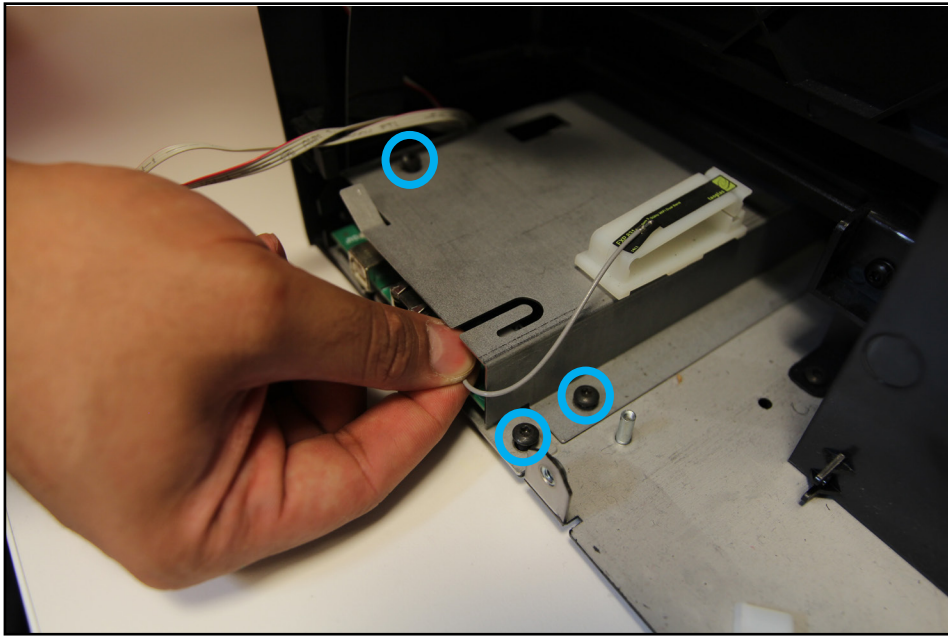
- Remove the two (2) socket cap screws tensioning screws and slide belt out of Belt Clips. Pull belt out of Gantry assembly and set aside.
- Remove shoulder screws attaching Idler Pulleys using a 2.5 hex driver
- Pull belt out of Gantry assembly and set aside.



Step 10 - Disassembling Gantry Assembly

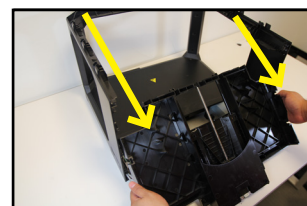
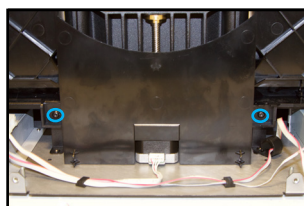
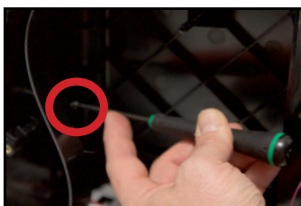
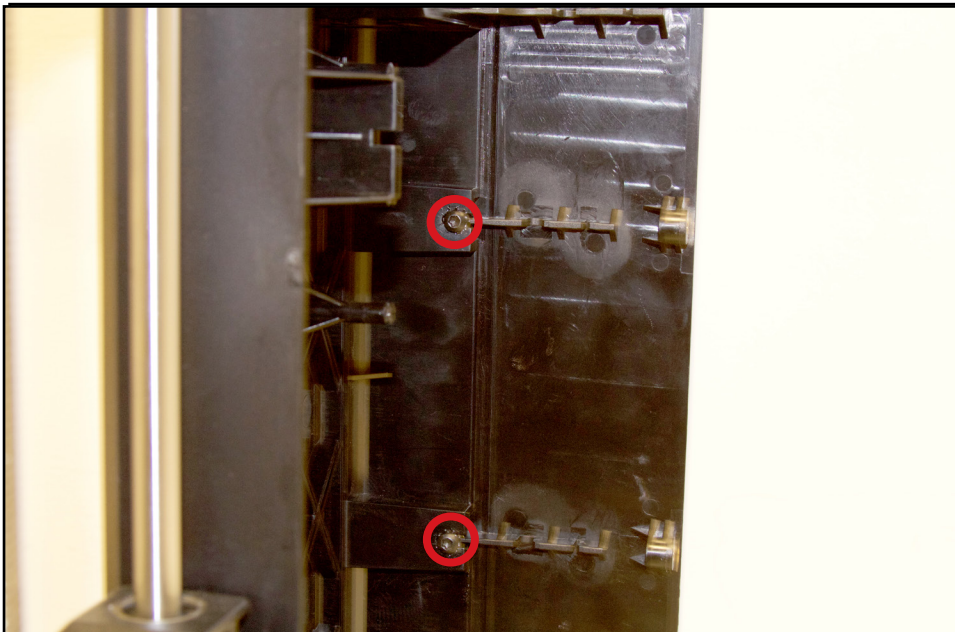
- Remove the following screws:
 - Eight (8) socket cap heads attaching the X Gantry Extrusion to the Y Gantry Extrusions. Repeat for both Left and Right Y Gantry Extrusions bracket.
 - Using a 2.0mm hex driver loosen up the shoulder screws to remove the Idler Pulleys. (if needed)
 - Eight (8) flat heads attaching the Carriage Adapter to the gantry rails.
- Slide Carriage Assembly mount out of the X Gantry Bracket to expose the linear bearings.





Step 11 - Remove Brooklyn PCB

- Unplug the HDMI Cable and remove the Electrostatic Discharge Cover (ESD). Remove the two (2) button heads using a T20.
- Remove the one (1) button head attaching the PCB Adapter Plate to the Base Plate.
- Gently lift the ESD cover and unplug the WiFi Antenna. Next open the white cable clip located on the top of the ESD cover and remove the Motor Cable Harness. Unplug the Z-Motor and set aside.
- Pull the Brooklyn PCB towards yourself to give some slack. Press down the white tab on the 20 pin Power Supply connector and pull out of Brooklyn PCB. Slide out of metal slot to remove.



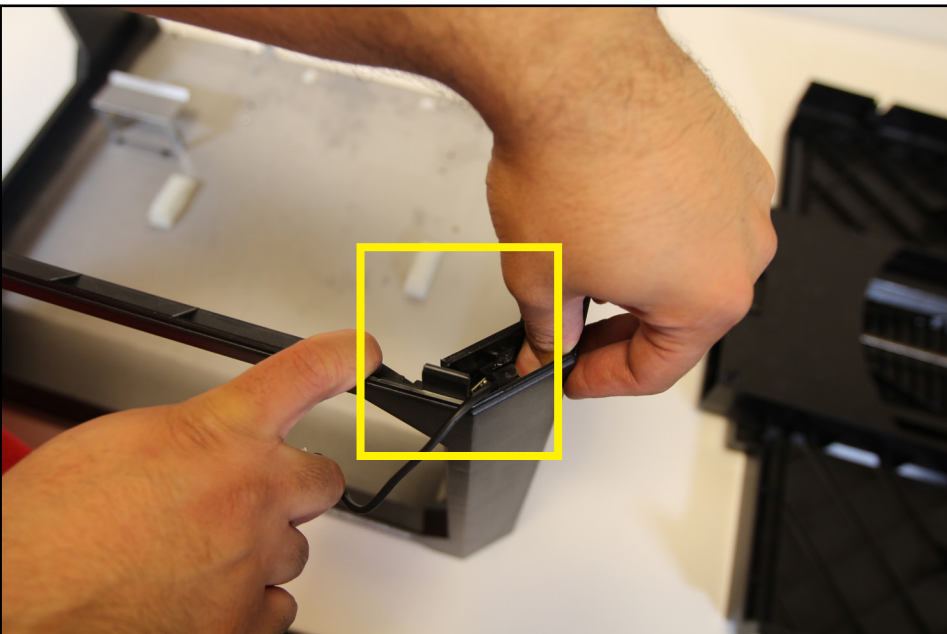
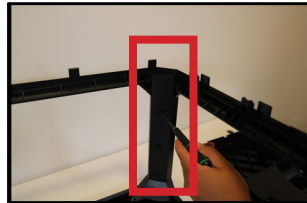
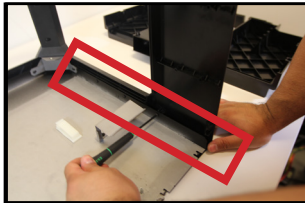
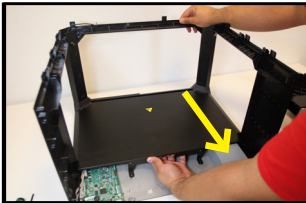
Step 12 - Remove the Z-Case

- Remove the following screws:
 - Four (4) thread forming screws that attach the Z-Back to the side panels
 - Two (2) button heads that attach the Z-Back to the Floor Plate.
- Remove all white wiring clips from the bottom of the panel with the wire harness. (this gets in the way of removing the z case in next step)
- Pull Z-back towards you away from the body of the Replicator+ and set aside.



Step 13 - Disassemble the Housing Assembly

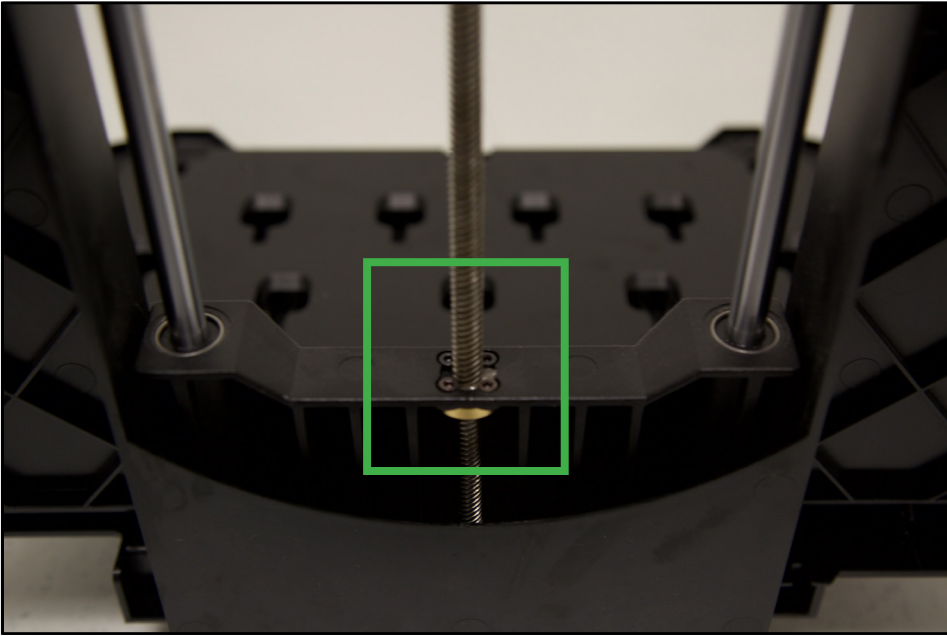
- Remove the following screws:
 - Two (2) Buttons heads located on the front of the printer on the
 - Two (2) Buttons heads that attach the Floor plate to the Base Plate (inside the Replicator+) using a
- Pull the Floor Plate away from the front of the Replicator+ to remove.
- Remove the seven (7) thread forming screws that attach the Left and Right Panel to the Base Plate.
- Remove the six (6) thread forming screw that attach the Left and Right Panels to the Front Panel.



Step 14 - Remove the Camera

- Remove the Camera by pushing on the Camera Mount Clip that holds it on to the Left Panel.





Step 15 - Remove Z-Motor and Z-Nut

- Remove four (4) socket cap bolts attaching Z-Nut to the Z-Stage .
- Remove four (4) socket cap bolts attaching the Z-Motor to the Z-Back and turn threaded lead screw to remove from Z-Stage.

