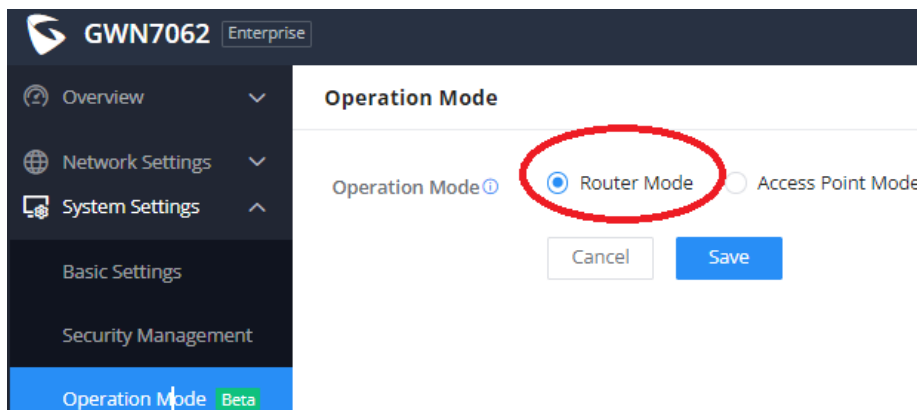


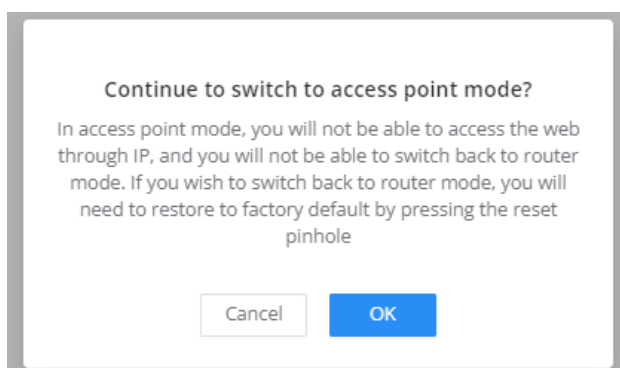
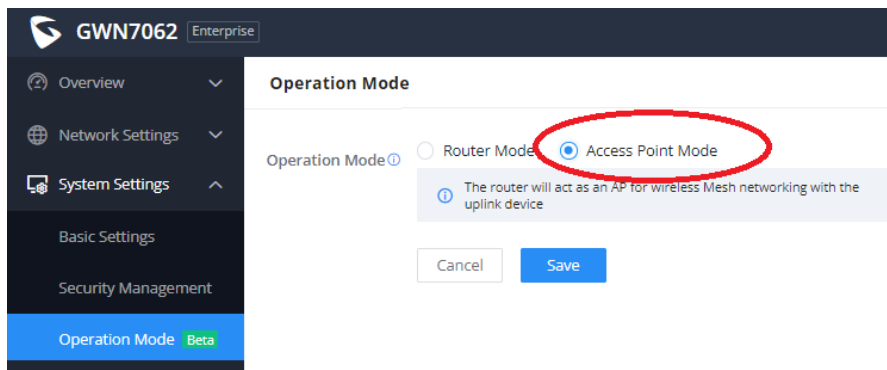
Configuring 2nd GWN7062 as Mesh AP

GWN wireless router can now change its Operation Mode between Router vs Access Point. The default is Router mode. Access Point mode will allow router to become a MESH RE-AP, in order to form MESH with other GWN CAP or wireless router

1. Upgrade your GWN7062 units to the latest firmware 1.0.9.34 or higher. Firmware available for download from <https://www.grandstream.com/support/firmware>
2. Once updated login to the main GWN7062 unit and set Operation mode to **"Router mode"**.



3. Login to 2nd GWN7062 unit and set Operation mode to **"Access Point Mode"**



Wait 3-4 minutes for unit to reboot. After changing to AP mode, the GWN7062 (AP) acts like a standalone AP. To establish the mesh.

4. Connect GWN7062 (AP) WAN <--> GWN7062 (Router) LAN. It should appear as the client of the router.

MAC Address	Device Name	IP Address	Connection Type
38:14:28:2E:E8:42	ANB-229	IPv4:192.168.80.20 IPv6:-	Wired
C0:74:AD:C0:74:AD	Grandstream-GWN7062	IPv4:192.168.80.205 IPv6:-	Wired

5. In Access Points menu click "Pair AP" and select the GWN7062 (AP) in the pop-up window

Device Model	MAC Address	Device Name
★ GWN7062	C0:74:AD:B5:62:2C	GWN7062

Access Points > Pair AP

ⓘ The firmware version cannot be lower than 1.0.23.25. If too low, please upgrade it in advance before pairing.

Device Model	MAC Address	IP Address	Firmware Version
✓ GWN7062	C0:74:AD:C0:74:AD	IPv4:192.168.80.205 IPv6:-	1.0.9.34

Cancel Save

Wait for the 2nd router to show as online (green circle) in Access Points menu

Access Points

Pair AP Takeover AP Configure Upgrade Delete Reboot Transfer Online: 2

	Device Model	MAC Address	Device Name	IP Address	Firmware Version
<input type="checkbox"/>	★ GWN7062	C0:74:AD:B5:AD:B5	GWN7062	IPv4:192.168.80.1 IPv6:-	1.0.9.34
<input checked="" type="checkbox"/>	● GWN7062	C0:74:AD:C0:74:AD	GWN7062	IPv4:192.168.80.205 IPv6:-	1.0.9.34

6. Create SSID and ensure that both devices are selected as member.

SSIDs > Edit SSID

Basic Information

Wi-Fi ☒

*Name 1~32 characters

Associated VLAN ☐

SSID Band ☐ Dual-Band ☒ 2.4G ☐ 5G

Access Security

Advanced

Device Management

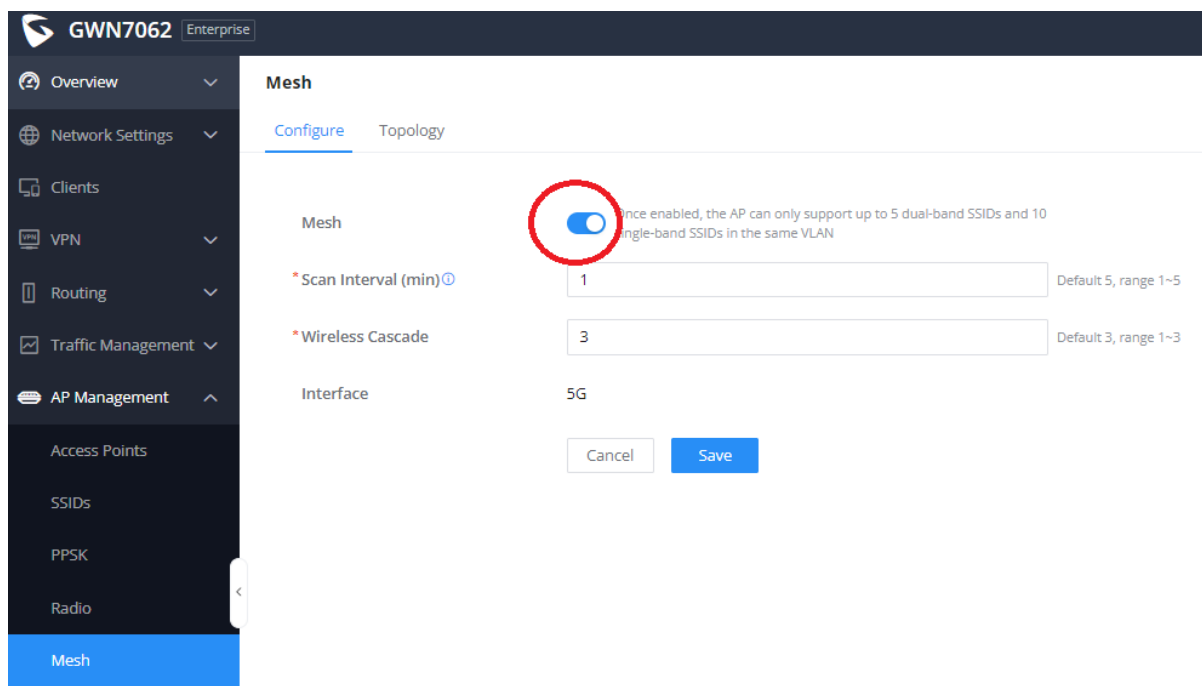
☒ All Devices

	Device Name	Device Model	MAC Address	SSIDs
<input checked="" type="checkbox"/>	GWN7062	GWN7062	C0:74:AD:98:74:AD	2.4G: 2/15 5G: 1/15
<input checked="" type="checkbox"/>	GWN7062	GWN7062	C0:74:AD:C0:74:AD	2.4G: 2/15 5G: 1/15

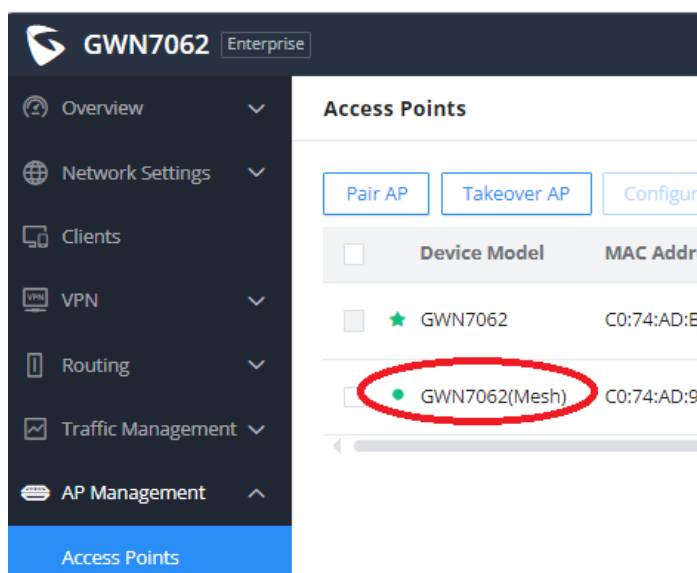
Selected: 2

Cancel Save

7. Enable mesh and click save. Wait approx. 5 minutes to ensure that both devices are loaded with the mesh configuration.



8. Unplug the WAN of the GWN7062 (AP) and wait until it appears online. The AP should be showing **"GWN7062 (Mesh)"** in the Access Points menu. If it doesn't come online, you might need to unplug-replug the power for the AP, or repeat connecting its WAN back to the router's LAN.



9. If you power off and relocate the AP wait 5-10 minutes after powering on and check if the unit is showing as online **"GWN7062 (Mesh)"** in the main router **"Access Points"** menu as per above image